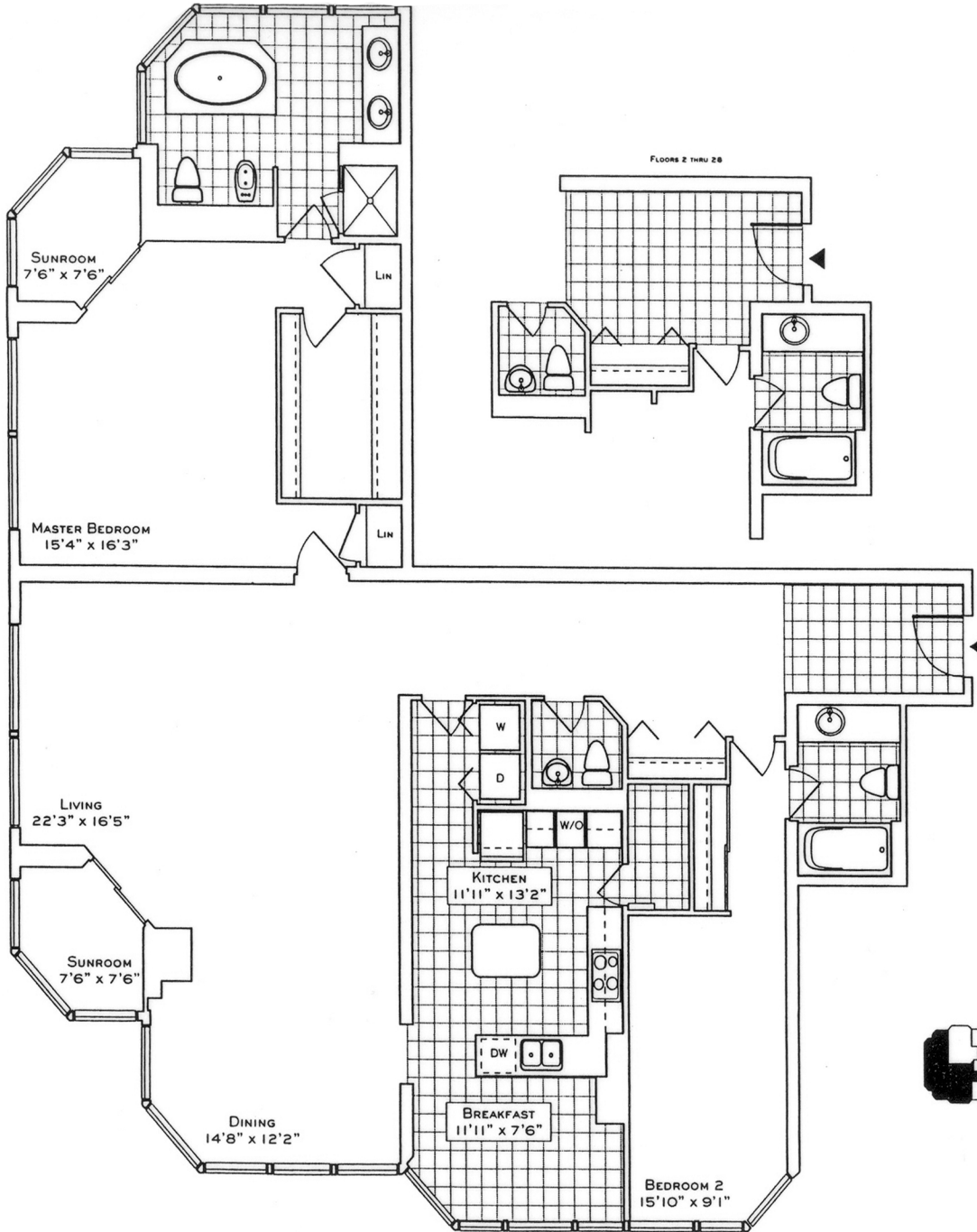


FLOOR PLAN

1 PALACE PIER COURT SUITE 4206



The Water Point

SUITE 06
1985/2028 SQ. FT.
(FLOORS 2 THRU 28/29 THRU 44)
SUITE 01
(REVERSE PLAN)
1985 SQ. FT.
(FLOORS 2 THRU 28)

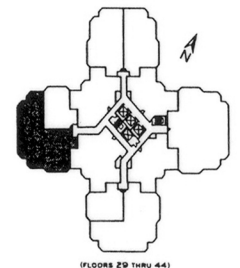
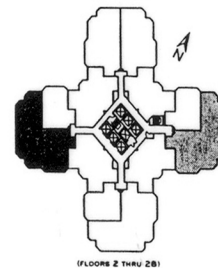
Your new home at Palace Place is about a million miles from the ordinary, offering a symbiotic lifestyle in a landmark building. From valet parking to the unsurpassed service of the concierge who, like the manager of a 5-star hotel, will cater to your every whim.

Play squash, swim, work-out or relax in a soothing whirlpool. The rooftop 'Lakeshore Club' offers an exclusive dining room, video theatre, and party facilities with 360° views of the city and lake that are truly breathtaking.

Additionally, there is a private shuttle service to and from downtown, a fully equipped business centre, tuck shop off the lobby and, for overnight visitors, guest suites.

Living at Palace Place, on your private peninsula overlooking Lake Ontario is an experience that can never, will never, be duplicated. Enjoy.

 **PALACE PLACE**



Plans, specifications and dimensions shown are approximations and are for illustrative purposes only and may not coincide with the existing site, or conditions. Plans are subject to change without notice. The actual floor area may vary from the stated floor area in accordance with OHSNY provisions. Plans shown are not to scale.

ROYAL LePAGE
Royal LePage Real Estate Services Limited, Brokerage

Daiva Dalinda, Broker, and Luke Dalinda, Sales Representative
Royal LePage Real Estate Services Ltd., Brokerage
416 236 1871 ldalinda@Dalinda.net



The information that has been written herein has been obtained from sources that have been deemed reliable. There has been no reason to doubt its accuracy, but, regretfully, it cannot be guaranteed. Royal LePage Real Estate Services Ltd., Brokerage. © DalindaTeam.com.